



Barton Peveril

Welcome to the Gifted and
Talented Evening for New
Students and their Parents
March 2011





Barton Peveril

Introduction & welcome	Jonathan Prest
The Gifted & Talented Programme	Steve Mukherjee (Head of Faculty)
The Extended Project	Students
University of Southampton	Chris Fuller
Applying to Oxford and Cambridge	Steve Mukherjee and students

Welcome and Introduction

Jonathan Prest, Principal



Barton Peveril



Why do we have a Gifted and Talented Programme?



Promoting aspirations



Barton Peveril

“The principal, governors and senior managers provide outstanding strategic leadership and direction. Together with staff, they have developed the college’s ethos and values, to promote high standards and raise aspirations, with an emphasis on improving teaching and learning and added value for students”
Ofsted 2010

Support, guidance and monitoring progress



Barton Peveril

“Students benefit from outstanding academic and pastoral guidance and support. Systems for monitoring students’ progress on their courses are exemplary”

Ofsted 2010



Preparing students for university



Barton Peveril

“Students are well prepared for life after college, and those who wish to go to university usually achieve their aim. The proportion of students winning places at the universities with the keenest competition for places is rising”

Ofsted 2010



More than just an academic education...



Barton Peveril

“Students benefit immensely from a particularly wide range of enrichment activities that contribute to their economic and social well-being and their development as citizens”

Ofsted 2010





Barton Peveril

Who are the Gifted & Talented ?





Barton Peveril

- Those young people who are achieving or have the potential to achieve at a level beyond their year group and/or peers
- ‘gifted’ – refers to the above, in an academic (results) sense
- ‘talented’ – those demonstrating the greatest potential in a more practical sense (perhaps in sport, music, art)



Why a G & T programme ?



Barton Peveril

- Because G & T students have support needs, just like every other student.....these needs just happen to be a little different
- These two years will most likely determine the career path which will influence the rest of your life



How do we define the G & T cohort ?



Barton Peveril

- Initially, the academic ‘gifted’ cohort is defined by those having an ALIS score above **6.7** (ie. on average, a student taking 10 GCSEs would have got 7 x A ; 3 x B) – anybody just under this figure but keen would also be fine to join
- The ‘talented’ are identified by staff referral (at this college or from previous schools) – our application procedure will have registered such talent



Student Ambassadors



Barton Peveril



JFK : 'And so, my fellow Bartonians : ask not what your college can do for you.....ask what you can do for your college '



The 'Talented'



Barton Peveril

- The college can be flexible in timetabling arrangements to allow students time off as required
- To ensure that students time manage effectively to fulfil academic ambitions too



The Talented – Drama (ex-BP)



Barton Peveril

- Colin Firth



- Tom Deacon (Radio 1)



The Talented – Sport (ex-BP)



Barton Peveril



Wade Elliott
(Burnley)



Chris Draper (Athens)

Music roll of honour !



Barton Peveril

- **Matt Baxman** - grade 8 drums
- **Alice Moseley** – grade 8 clarinet ; grade 8 piano (pending result) ; a Hampshire composition award student
- **Tom Sellen** – grade 8 drums
- **Kelly Radford** - Grade 8 singing

The students named above are involved with regional bands/orchestras.



Band/Orchestra involvement.....



Barton Peveril

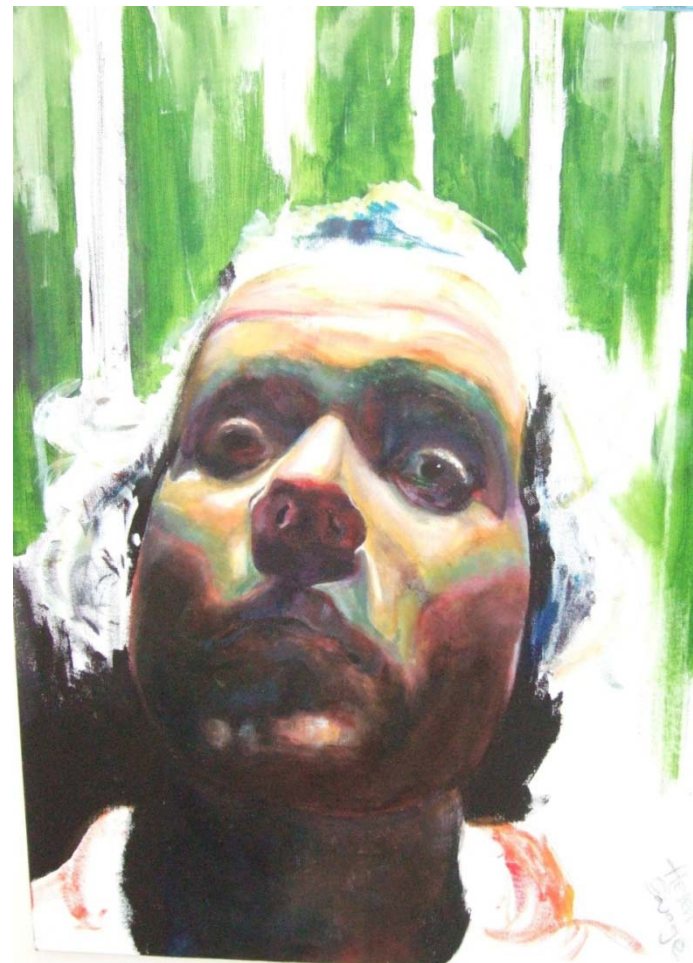
- Southampton Youth (and Youth Jazz) Orchestra
- Southampton Youth Wind Band
- Southampton Youth Brass Band
- Hampshire County Wind Band
- Hampshire County Chamber Orchestra
- Hampshire County Youth Choir
- Hampshire County Youth (and Youth Jazz) Orchestra
- Romsey Area Schools Orchestra
- Romsey Area Youth Jazz Orchestra



Art.....



Barton Peveril



Barton Peveril and Sports



Barton Peveril



Team Achievements in 2010



Barton Peveril

- **Football** - 1st XI were 2nd in the County league
- 2nd XI were 3rd
- **Mixed hockey** – league winners
- **Mixed badminton** – league winners
- **Boys basketball** - 2nd in the league





Barton Peveril

The academic 'gifted' programme



Criteria determining university offers



Barton Peveril

- GCSE grades (what you do this year is important)
- AS grades (how many will you take onto A2 ?)
- Enrichment and extension work (mainly subject-related) in Yr 12 and Yr 13
- Tutor reference and predicted grades for A2 subjects
- The student's Personal Statement
- Aptitude tests / submitted work / interviews required for particular competitive subjects
- Your final A2 grade outcomes (once the offer has been made)

What makes up the college G & T programme ?



Barton Peveril

There are essentially two broad strands to the programme :

- 1) The central programme provided every week
- 2) Making use of the range of opportunities created by different subject areas - subject specific development is important (both in and out of college)



BP and The G & T programme (what we can do for you)



Barton Peveril

- The Extended Project
- The AQA Baccalaureate
- The weekly G & T Programme
- Oxbridge Co-ordinator and team
- Clubs and Societies and other enrichment opportunities
- The Student Senate ; the Student Committee
- Mentoring ; revision lectures & workshops
- Relevant work experience
- Develop responsibility and leadership skills



Some of this year's G & T sessions.....



Barton Peveril

- A workshop on 'leadership and leadership skills' delivered by the Principal
- The UCAS system explained
- 'Managing Assessment', including revision strategies, delivered by the Assistant Principal, Curriculum
- Developing critical thinking, reasoning and logical skills
- Practical advice about A2 choices, including the AQA Baccalaureate and the Extended Project
- Staff vs. Students 'Eggheads Quiz'



What do you do that is special and sets you apart from the crowd ?



Barton Peveril

- Applying for Maths at Cambridge and reading Simon Singh's 'Fermat's Last Theorem' or 'The Cracking Code Book' – what subject-related wider reading are you undertaking ? (over and beyond the syllabus)
- Applying for Medicine at Liverpool and completing an AS in Religious Studies...
- Applying for Law at Oxford and gaining relevant work experience

The Gifted and Talented (what you can do for yourselves)



Barton Peveril

BBC RADIO 4

Thursday 24th March

- | | |
|----------|---|
| 9.00 am | In Our Time (with Melvyn Bragg).... <i>social history</i> |
| 11.00 am | Crossing Continents..... <i>oil & eco-systems</i> |
| 12.04pm | Budget Call..... <i>for economists</i> |
| 9.00pm | Science Betrayed..... <i>about the MMR scare</i> |

Other regular programmes

Front Row, Law in Action, Woman's Hour, PM, Today in Parliament, Book of the Week



The Gifted and Talented

(what you can do for yourselves)



Barton Peveril

TV on Thursday 24th March

12.00 pm	The Daily Politics (BBC2)
6.00 pm	Eggheads Quiz (BBC2)
7.00 pm	Wind Farm Wars (BBC2)
9.00 pm	The British at Work (BBC2)
10.40 pm	Question Time (BBC 1)
11.40 pm	The Week (BBC1)



College clubs and societies



Barton Peveril

- Amnesty Group
- Maths Club
- The Vet Club
- Sociology Society
- Many sports-related (eg. basketball, trampolining)
- Many music-related (eg. brass quartet ; flute group)
- The Physics Olympiad
- Chemistry Club
- Creative writing
- Life Drawing
- Unity Radio (with live broadcasts)
- Philosophy Club & Religious Studies clinic





Barton Peveril

The Extended Project



Some examples...



Barton Peveril

- An exploration of mood in Shelley's poetry expressed in Dance
- Does quantum mechanics support the philosophical idea of human freedom ?
- Is Communism today true to its Marxist roots?
- What makes a film successful? An exploration into writing and directing.



Assessment



Barton Peveril

- Production Log
- Product
 - 5000 words
 - Or
 - artefact/performance & 1000 words
- Presentation



Support



Barton Peveril

- A mentor/supervisor and 2 hours' support/teaching per week.
- Other staff – from subject departments
- College resources as appropriate
- Input from Library & the University of Southampton
- Electronic Materials – Course Materials on Moodle, our VLE system



Why do it?



Barton Peveril

- Personal interest – you become the expert !
- Develop useful study skills for Higher Education and beyond
- Supports UCAS application – very positive response from universities (including Oxbridge)



Why Oxbridge (Oxford or Cambridge) ?



Barton Peveril

- Oxford and Cambridge are commonly recognised as the top two British academic universities – indeed, many Oxbridge undergraduates go onto further academic study, becoming specialists in their field
- Students managing to gain a place at these universities will engage with the very best staff and fellow students in their field – the collegiate system (made up of 38 and 31 colleges respectively in Oxford and Cambridge) creates a close and supportive environment where students can excel academically
- Degrees from these institutions have a high currency, leading to top professional jobs
- Many other reasons.....



Oxbridge Support at BP



Barton Peveril

- We have an Oxbridge team in college that will identify suitable applicants early on and guide and support them (eg. Oxbridge conference this Friday)
- This cohort is likely to be those students with an ALIS score of about 7.2 and above
- If you are interested in applying to Oxford or Cambridge, make sure you look at their respective websites for courses/colleges and Open Days
- There is guidance throughout the application process, with 1-to-1 assistance given ; and mock interviews



Oxford & Cambridge – beyond the myths



Barton Peveril

- * Following a question about the supposed independent sector bias of Oxbridge, the reply of one former Oxford admissions officer was as follows :

*'Admissions is totally on **merit**. Sometimes private school kids [appear] more confident.....and are prepared by their schools. I always lookedat the **substance** and **potential** of the candidate, as do most admissions tutors at Oxford.'*

- * In January our students featured heavily in a BBC Radio 4 documentary 'How to get into Oxford'



Key Contacts



Barton Peveril

- Steve Mukherjee (G & T and Oxbridge co-ordinator)

sdm@barton.ac.uk

- Debra Collins (Student Manager)

dac@barton.ac.uk

